



# November 6, 2012 Post Election Profile

**299 Precincts in the Election**  
**101 Polling Locations**

**42 Districts**

- 7 Municipal
- 6 Village
- 13 Township
- 20 School

**55 Candidates**

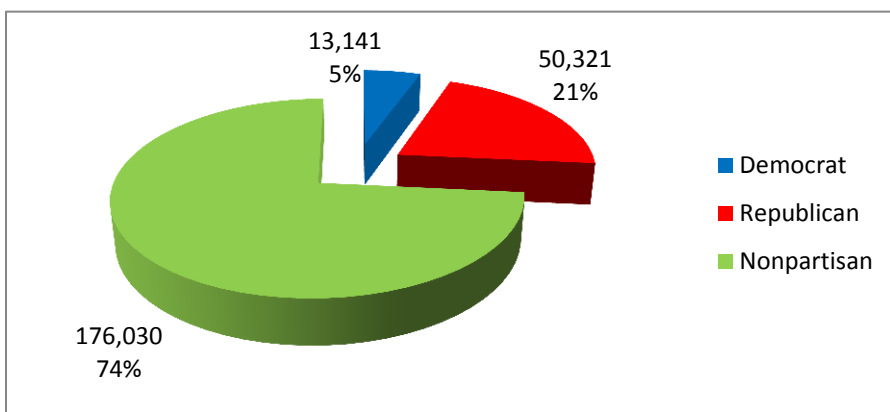
- 20 Federal
- 9 State
- 14 Judicial
- 12 County

**24 Issues**

- 2 State
- 10 Municipal
- 3 Township
- 2 School
- 7 Local Option

**Total Registered Voters: 239,993**

- 13,141 Democrat
- 50,321 Republican
- 176,030 Nonpartisan
- 41 Constitution
- 57 Green
- 291 Libertarian
- 10 Socialist

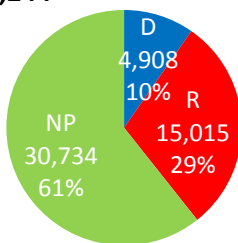


**Voter Turnout: 71.3%**

**171,170** Ballots Cast  
**116,746** Ballots cast on Election Day (68%)  
**48,733** Ballots cast Early (28%)  
**5,691** Valid Provisional Ballots Cast (3%)

**Vote by Mail Ballots Requested: 50,244**

- 4,908 Democrat
- 15,015 Republican
- 30,734 Nonpartisan
- 93 Minor Party

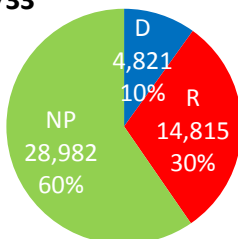


**In-Person Early Voters: 21,379**

Included in Total Ballots Returned.

**Vote by Mail Ballots Returned: 48,733**

- 4,821 Democrat
- 14,815 Republican
- 28,982 Nonpartisan
- 92 Minor Party

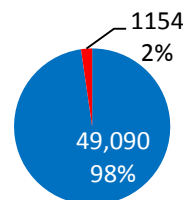


**Challenged Absentee Ballots: 357**

- 141 Returned Late
- 116 No ID
- 12 Invalid signature on ID Env
- 13 No stub attached
- 11 No signature on ID Env
- 34 No ID Envelope Returned
- 30 Returned Undeliverable

**Vote by Mail Turnout: 28%**

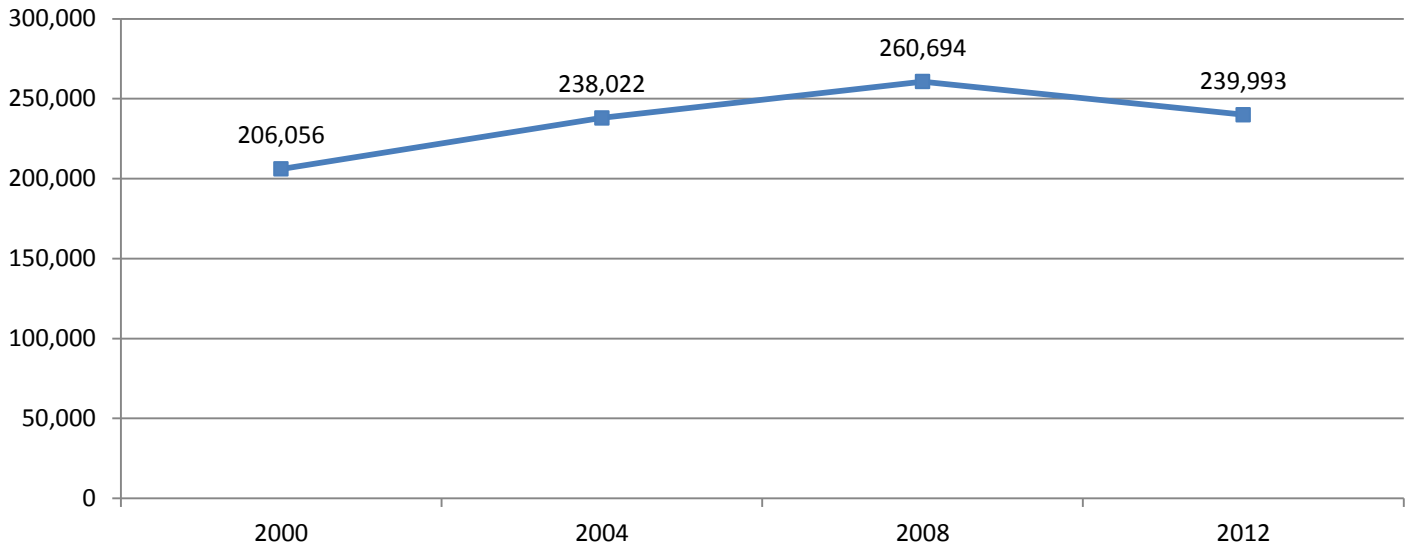
- Vote by Mail Returned, Valid and Invalid
- Vote by Mail Requested, Not Returned



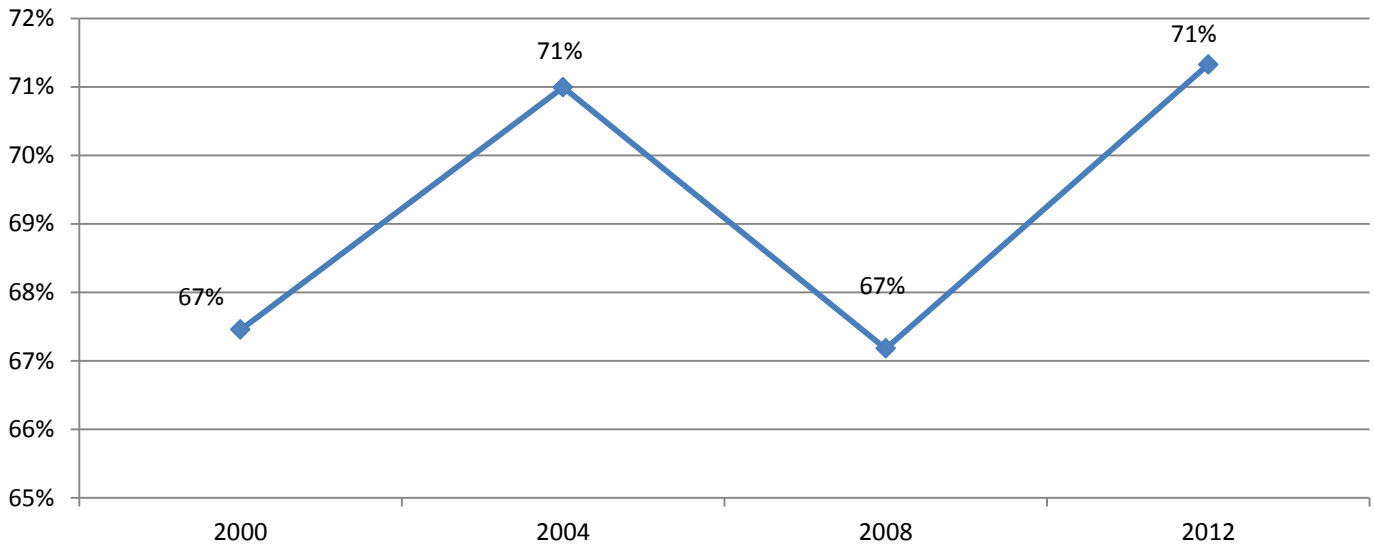
**Challenged Provisional Ballots: 1,150**

- 853 Not Registered
- 135 Wrong polling location
- 99 Missing signature
- 11 Missing ID
- 24 No printed name
- 19 Incomplete information
- 9 Second Vote

## Voter Registration Trends in Presidential Elections: 2000-2012



## Voter Turnout in Presidential Elections: 2000-2012



### 2004 November General

**238,022** Total Registered Voters  
**168,976** Total Ballots Cast  
**71%** Turnout  
**16,003** Early Votes Cast  
**152,864** Election Day Votes Cast  
**6,067** Total Provisional Votes (valid & invalid)

### 2008 November General

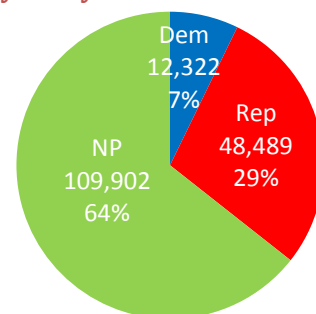
**260,694** Total Registered Voters  
**175,132** Total Ballots Cast  
**67%** Turnout  
**43,452** Early Votes Cast  
**138,452** Election Day Votes Cast  
**6,671** Valid Provisional Votes  
**1,151** Invalid Provisionals

### 2012 November General

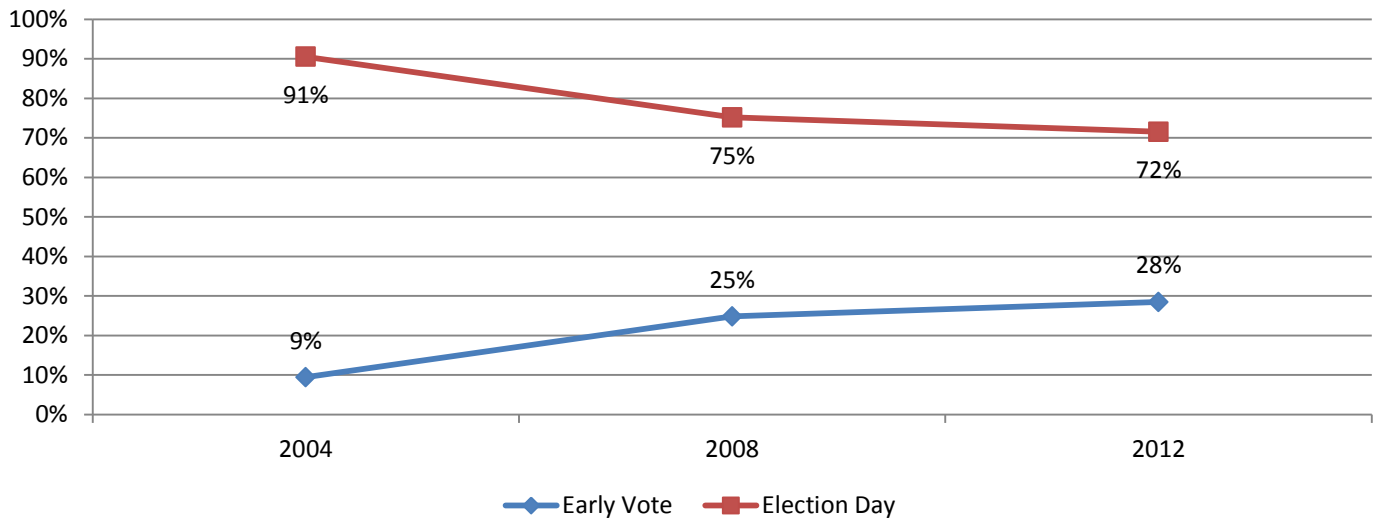
**239,993** Total Registered Voters  
**171,170** Total Ballots Cast  
**71%** Turnout  
**48,733** Early Votes Cast  
**122,539** Election Day Votes Cast  
**5,691** Valid Provisional Votes  
**1,150** Invalid Provisionals

### 2012 November General Turnout By Party

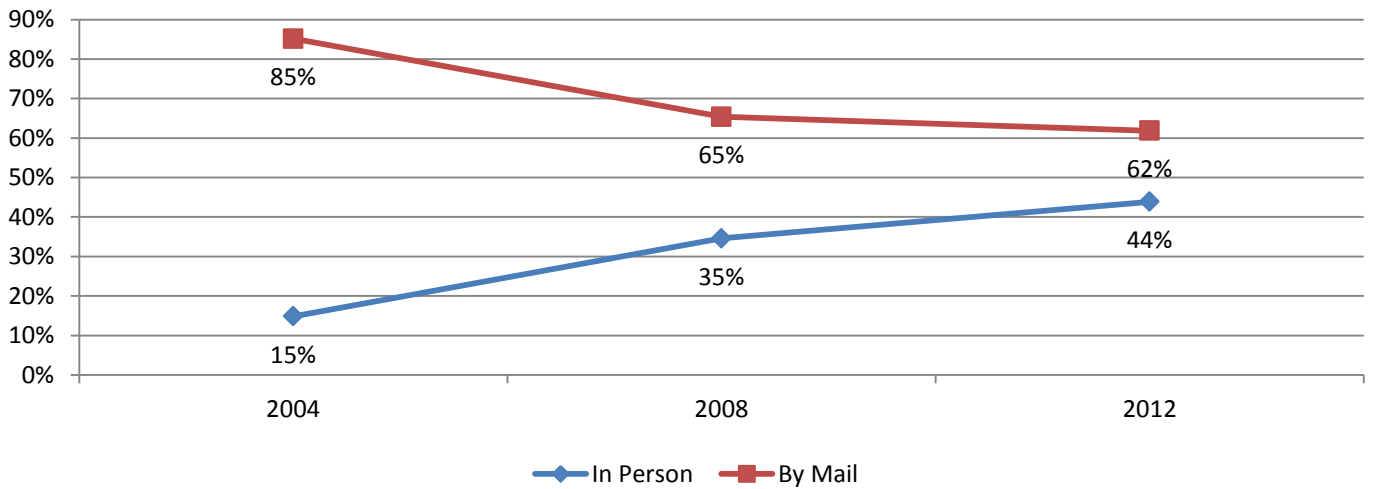
12,322 Democrat  
 48,489 Republican  
 109,902 Non-Partisan  
 260 Libertarian  
 8 Socialist  
 34 Constitution  
 55 Green



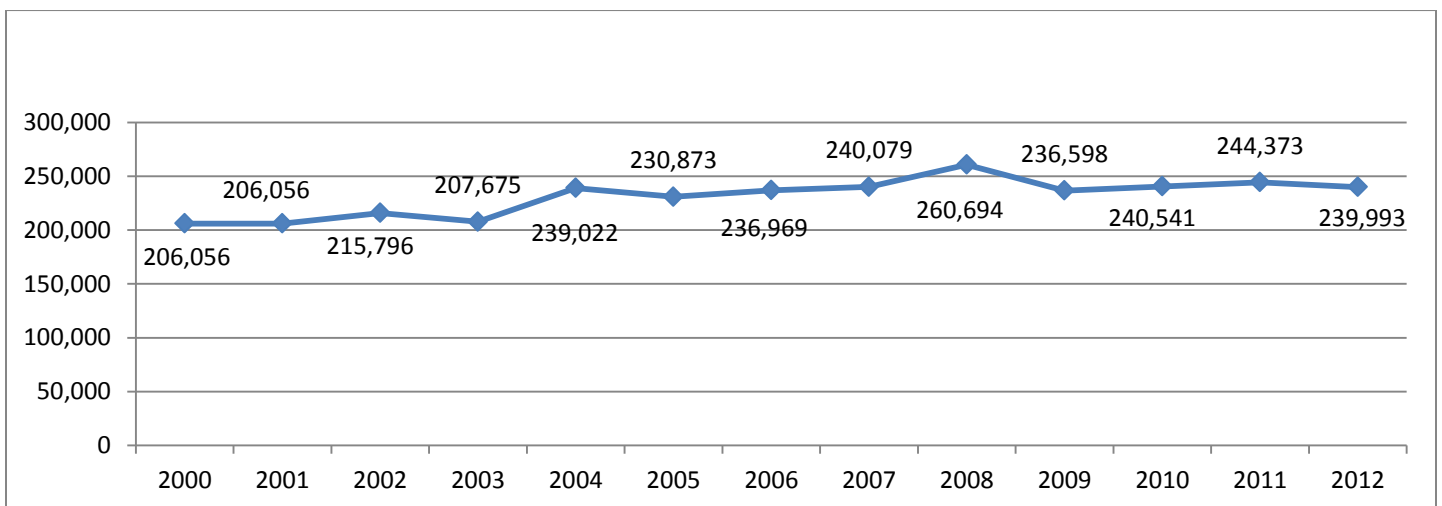
### Early Voting Compared to Election Day Ballots in Presidential Elections: 2004-2012



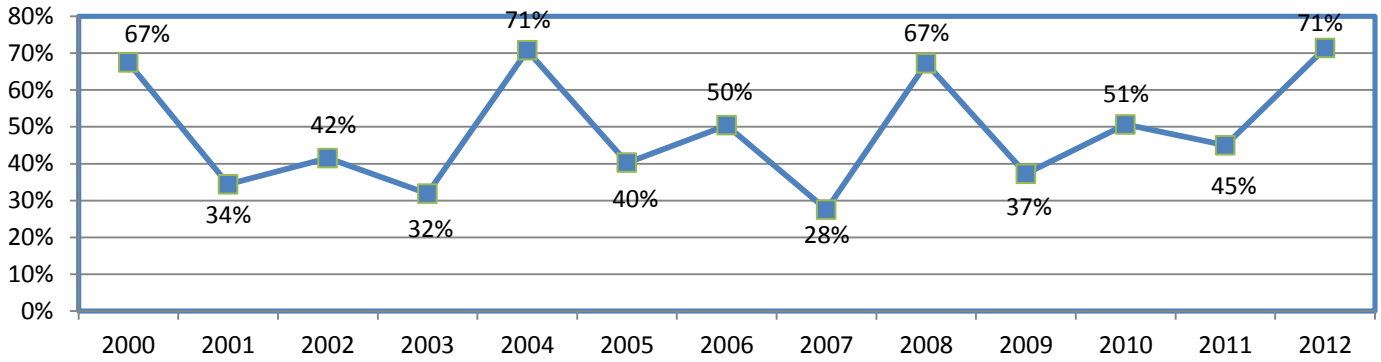
### In-Person Early Voting Compared to Vote by Mail in Presidential Elections: 2004-2012



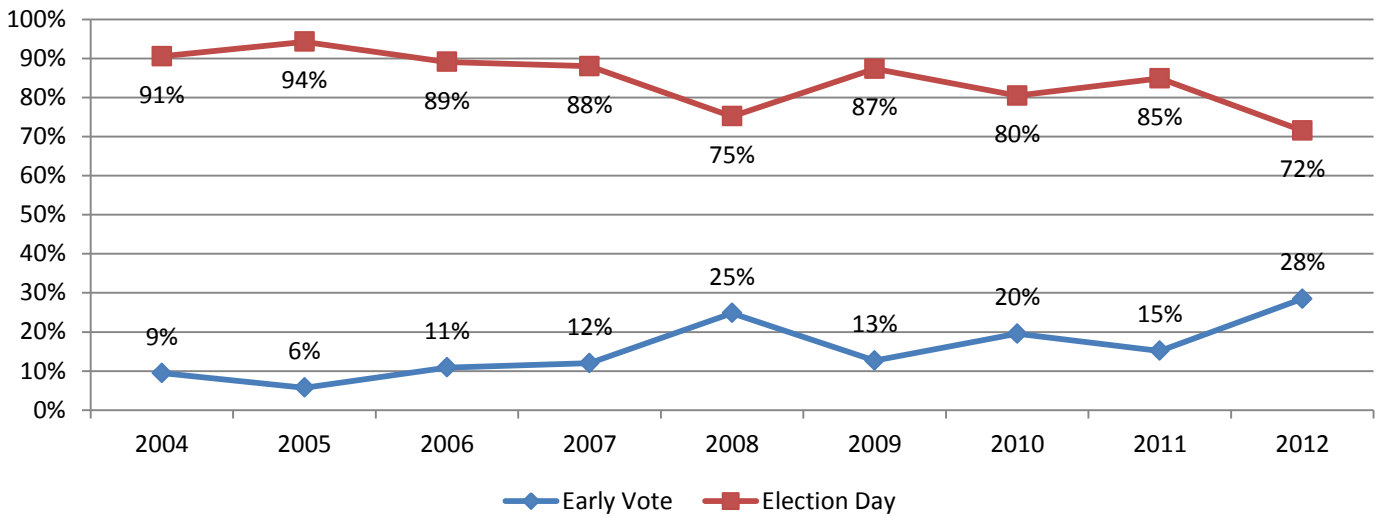
### Voter Registration Trends in General Elections: 2000-2012



## November General Election Turnout: 2000-2012



## Early Vote Trends in General Elections: 2004-2012



## Early Vote Ballots Cast by Party in General Elections: 2006-2012

